

**TOWN OF NEEDHAM  
INVITATION FOR BIDS (IFB)  
IFB 21DPW145C  
Walker Lane Sewer Extension  
Addendum #1**

**Notice to All Prospective Bidders**

<b>Addendum #1 RELEASED ( January 29, 2021 )</b>
--

The following changes are made to the bid documents for IFB 21DPW145C:

The following is a summary of the above referenced project Pre-Bid meeting held on a zoom meeting on January 22, 2021 at 11:00 AM.

**I. Summary of Pre-Bid Meeting:**

- The Contractor must fill in both the number of days for price being held firm and the number of days to complete work on page 9 of the Proposal. The number of days to complete the work is essential for awarding and determines when the Contractor will take over payment of police details and construction inspections per the Contract. The DPW Engineering Division in its contracts typically does not set contract end dates. It is up to the contractor to determine in their proposal the proper schedule to complete the project.
- The Contractor will be responsible for scheduling and canceling police details and setting up detours. Police details are a reimbursable expense. The Contractor will be required to coordinate with the police and submit a proposed schedule and traffic plan for the work prior to any closures.
- Hours of work shall be 7:00 am to 3:00 pm, Monday - Friday, unless approved by the Town Engineer and the Needham Police Department. Off hours work must be requested at least 48 hours in advance.
- The Contractor must submit a list of their subcontractors who will be performing any paid item for Town approval before work on the project starts. The bonding and insurance companies must be notified immediately after the Town's acceptance of the subcontractor(s). The Contractor is solely responsible for all work, including the work of subcontractors.
- The Town Engineer must approve changes to the Contract in writing. A verbal approval will be given and logged into the field inspectors note book as paperwork is processed, as not to slow down the project. Any work that is performed outside of the Contract, without the Town Engineer's permission will not be paid. All change orders must be signed by both the Contractor

and the Town Engineer prior to payment for work. Certified payroll is required with all requests for payment.

- The Town will not accept “standard” AIA Bonds. The acceptable performance and payment bonds are provided on page 21 and 69 through 72 for the Contractor’s use. The Contractor may use a similarly worded bid bond that is provided in Section 2.
- Barrels, barricades, traffic cone, and signage are incidental to the work per the Contract. Item 9.20.2a is for MassDOT permit only (DOT permits require message and arrow boards not covered in the Contract). This is not a MassDOT permit project. Under the Town specification, traffic control devices and signage are incidental to the work. Barrels and barricades will be reflectorized and laminated with flashing lights that the Contractor shall provide. A minimum of 25 devices will be required per 250lf of impacted roadway. The Engineering Division has some barrels that can be borrowed, if needed, but the Contractor will be responsible for them.
- The Town has been issued a negative determination of applicability from the Needham Conservation Commission. Erosion controls must be in place prior to start of construction and the contractor will need to notify the Conservation Agent. The contractor should note that dewatering of the trenches will probably be necessary. If and when this occurs the Conservation Agent is to be notified prior to activity. Dewatering shall be through a filter bag and material, labor and equipment necessary is considered incidental to the bid.
- Contractors are reminded to read Section 3 Article XLII Guaranty. The Town has additional requirements during the guarantee period that contractors need to be aware of.
- The contractor will need to meet Watertight construction requirements as specified in Section 8 and provide leak testing per specifications
- One large pine tree is leaning over Walker Lane slightly and town prefers that it is preserved but acknowledges it may need to be removed if the root system is damaged during the installation. The Conservation Commission requests notification if determined that the tree needs to be removed.
- Contractors should not assume if there is quantity’s for an item that it will not be used. The town will expect you to perform the work at the price you bid for that item. We are amending the unit bid sheet to remove some items that were designated a quantity that should be listed as zero and other items that need to be clarified.

- Any item with quantities of zero may be left blank.
- The plans note that the existing guard rail is to be removed and reset. It should read, “Remove and Dispose”. Part of this addendum includes a detail for a new wood guard rail to be installed, and a unit item for measurement and payment.
- Contractors are advised that they are required to manage their storage and staging locations so that the street has access for the residents and emergency vehicles. If the contractor negotiates staging or storage locations on private property an in writing agreement with the owner is required.
- The prospective bidders are encouraged on their own to visit the site.
- Contractors bids due Thursday, February 4, 2021 at 12 PM at PSAB, 500 Dedham Avenue, Needham, MA 02492, first floor admin office.

Questions:

1. Q: Would you be able to provide me with the bidder's list.

**A: See Attached**

2. Q: Where it states Renew Sewer Service Lateral at a quantity of (2). On the plans it only shows an existing sewer service lateral for house #77, at which property will the other renewal be?

**A: There is one lateral known in that location, a second is added in the bid sheet in case a second connection is found during the construction.**

3. Q: The drawings for this job call for 567' - 8" SDR26 PVC pipe with approximately 100' of insulation. However in the specs there is no bid items for either of these items. Can you clarify?

**A: Plans call for 8” SDR26 PVC pipe, use the itemized bid for this material in place of SDR35. An updated Specification for the insulation is attached as well as a new itemize bid sheet showing the referenced items noted.**

4. Q: We see this is a MassDOT pre-qualification project can you let us know the class of work?

**A: This project does not require MassDOT prequalification**

5. Q: Is DCAMM certification required?

A: **No**

6. Q: What is the time for completion on this project?

A: **The contractor will need to include the proposed number of calendar days per requirements described in Section 2.**

7. Q: Can a detail be provided for the wooden guard rail to be installed for bid item 9.13.3b?

A: **See attached detail**

8. Q: Is it the intent to provide sewer laterals to all homes on the street and how will they be paid.

A: **No proposed laterals at this time except for the renewal at #77. Residents may request to be connected separate from this contract, and the contractor has permission to make arrangements with the residents in this area so long as it does not interfere with this contract. A resident at 57 Walker Lane has an order to correct their failed septic system from the Board of Health and will likely seek pricing to connect into the new sewer system.**

9. Q: There is only 1 renew sewer lateral shown, where is the other.

A: **See answer question 2**

10. Q: There is an item for shrubs, where and what kind are they. Please clarify the unit of measure for the item.

A: **The town intends on selecting a mix of Ewes and PJM Rhododendrons (or similar valued shrubs) in the area of the existing guard rail; 3-gallon containers (min).**

11. Q: The plan show insulating the sewer main approx 100 feet, how is it paid.

A: **See answer question 3**

**Revision to the Contract Specifications:**

Addendum 1 was prepared in consultation with:

Joe Hobbs, Contract Administrator

Tom Ryder, Asst. Town Engineer

Anthony Del Gaizo, Town Engineer

Cecilia Simchak, Director of Finance for Public Services

Bidders are reminded that they must acknowledge receipt of any and all Addendums in section 2 on page 9.

The Town reserves the right to reject any and all bids as determined to be in the best interest of the Town and to waive minor informalities.

Attachments:

1. Pipe Insulation Specification
2. Updated Unit Bid Sheet
3. Detail of Proposed Guard Rail Replacement
4. Current Bidder's list

**[INSERT INTO SPECIFICATION]**

**8.1.3.1 Pipe Insulation**

Where the pipe is constructed with less than five feet of cover, the Contractor shall insulate the pipe and install insulation board above the pipe as shown on the plans. The insulation around the pipe shall be 2-inch thick polysocyanurate with vapor barrier.

Trymer 2000 as manufactured by Dow Chemical Company or an approved equal shall be used for insulating ductile iron pipes where required. The thickness shall be 2 inches as shown on the drawings. Vapor barrier to be Saran 560 as manufactured by Dow Chemical or approved equal.

Approved equal products from other manufacturers shall be Extruded-Polystyrene Board Insulation formed from polystyrene base resin by an extrusion process using hydrochlorofluorocarbons as blowing agent to comply with ASTM C578, Type IV, with 1.60 pounds per cubic foot minimum density and a compressive strength of 25 pounds per inch as specified in ASTM D1622 and ASTM D1621 respectively. The maximum thermal conductivity of the insulation shall conform to ASTM C518, C177, and C578. The maximum water absorption percentage by volume shall be one percent in accordance with ASTM D2842. The range of water vapor permeance shall be 0.4 to 1.0 perm in accordance with ASTM E96.

Measurement and payment for providing insulation of pipe shall be based on the unit bid price per linear foot and shall be measured along the top center line of the pipe including valves and fittings. Payment shall include all materials, labor, tools and equipment to install insulation as required per these specifications and plans.

Payment Items:	Unit
<b>8.1.10a-2</b> Pipe Insulation, All sizes	Linear Foot

UNIT PRICE BID SHEET

4.11 Reimbursement POLICE DETAILS — PREARRANGED AND PAID BY CONTRACTOR

X		\$10,000	\$10,000.00
UNIT PRICE IN WRITING DOLLARS AND CENTS		UNIT PRICE	TOTAL ITEM BID

4.17 Reimbursement SERVICE CONNECTION FEES — PAID BY CONTRACTOR

X		—	
UNIT PRICE IN WRITING DOLLARS AND CENTS		UNIT PRICE	TOTAL ITEM BID

5.2.3a 700 L.F. ERROR! REFERENCE SOURCE NOT FOUND.

		\$	\$
UNIT PRICE IN WRITING DOLLARS AND CENTS		UNIT PRICE	TOTAL ITEM BID

5.2.3b 700 L.F. ERROR! REFERENCE SOURCE NOT FOUND.

		\$	\$
UNIT PRICE IN WRITING DOLLARS AND CENTS		UNIT PRICE	TOTAL ITEM BID

5.3.4a .01 AC ERROR! REFERENCE SOURCE NOT FOUND.

		\$	\$
UNIT PRICE IN WRITING DOLLARS AND CENTS		UNIT PRICE	TOTAL ITEM BID

5.3.4b AC ERROR! REFERENCE SOURCE NOT FOUND.

		\$	\$
UNIT PRICE IN WRITING DOLLARS AND CENTS		UNIT PRICE	TOTAL ITEM BID

5.3.4c 1 EA ERROR! REFERENCE SOURCE NOT FOUND.

		\$	\$
UNIT PRICE IN WRITING DOLLARS AND CENTS		UNIT PRICE	TOTAL ITEM BID

5.3.4d 1 EA ERROR! REFERENCE SOURCE NOT FOUND.

		\$	\$
UNIT PRICE IN WRITING DOLLARS AND CENTS		UNIT PRICE	TOTAL ITEM BID

5.3.4e EA ERROR! REFERENCE SOURCE NOT FOUND.

		\$	\$
UNIT PRICE IN WRITING DOLLARS AND CENTS		UNIT PRICE	TOTAL ITEM BID

5.4.9a C.Y. ERROR! REFERENCE SOURCE NOT FOUND.

		\$	\$
UNIT PRICE IN WRITING DOLLARS AND CENTS		UNIT PRICE	TOTAL ITEM BID

5.4.9b 10 C.Y. ERROR! REFERENCE SOURCE NOT FOUND.

		\$	\$
UNIT PRICE IN WRITING DOLLARS AND CENTS		UNIT PRICE	TOTAL ITEM BID

5.4.9c C.Y. ERROR! REFERENCE SOURCE NOT FOUND.

		\$	\$
UNIT PRICE IN WRITING DOLLARS AND CENTS		UNIT PRICE	TOTAL ITEM BID

5.4.9d C.Y. ERROR! REFERENCE SOURCE NOT FOUND.

		\$	\$
--	--	----	----

UNIT PRICE IN WRITING DOLLARS AND CENTS	UNIT PRICE	TOTAL ITEM BID
5.4.9e 5 EA ERROR! REFERENCE SOURCE NOT FOUND.		
	\$	\$
UNIT PRICE IN WRITING DOLLARS AND CENTS	UNIT PRICE	TOTAL ITEM BID
5.5.10a C.Y. ERROR! REFERENCE SOURCE NOT FOUND.		
	\$	\$
UNIT PRICE IN WRITING DOLLARS AND CENTS	UNIT PRICE	TOTAL ITEM BID
5.5.10b C.Y. ERROR! REFERENCE SOURCE NOT FOUND.		
	\$	\$
UNIT PRICE IN WRITING DOLLARS AND CENTS	UNIT PRICE	TOTAL ITEM BID
5.6.6a 250 C.Y. ERROR! REFERENCE SOURCE NOT FOUND.		
	\$	\$
UNIT PRICE IN WRITING DOLLARS AND CENTS	UNIT PRICE	TOTAL ITEM BID
5.6.6b C.Y. ERROR! REFERENCE SOURCE NOT FOUND.		
	\$	\$
UNIT PRICE IN WRITING DOLLARS AND CENTS	UNIT PRICE	TOTAL ITEM BID
5.6.6c C.Y. ERROR! REFERENCE SOURCE NOT FOUND.		
	\$	\$
UNIT PRICE IN WRITING DOLLARS AND CENTS	UNIT PRICE	TOTAL ITEM BID
5.6.6d C.Y. ERROR! REFERENCE SOURCE NOT FOUND.		
	\$	\$
UNIT PRICE IN WRITING DOLLARS AND CENTS	UNIT PRICE	TOTAL ITEM BID
5.6.6e C.Y. ERROR! REFERENCE SOURCE NOT FOUND.		
	\$	\$
UNIT PRICE IN WRITING DOLLARS AND CENTS	UNIT PRICE	TOTAL ITEM BID
5.6.6f C.Y. ERROR! REFERENCE SOURCE NOT FOUND.		
	\$	\$
UNIT PRICE IN WRITING DOLLARS AND CENTS	UNIT PRICE	TOTAL ITEM BID
5.6.6g C.Y. ERROR! REFERENCE SOURCE NOT FOUND.		
	\$	\$
UNIT PRICE IN WRITING DOLLARS AND CENTS	UNIT PRICE	TOTAL ITEM BID
5.7.3a S.Y. ERROR! REFERENCE SOURCE NOT FOUND.		
	\$	\$
UNIT PRICE IN WRITING DOLLARS AND CENTS	UNIT PRICE	TOTAL ITEM BID
5.8.5a 200 C.Y. ERROR! REFERENCE SOURCE NOT FOUND.		
	\$	\$
UNIT PRICE IN WRITING DOLLARS AND CENTS	UNIT PRICE	TOTAL ITEM BID
5.8.5b 80 C.Y. ERROR! REFERENCE SOURCE NOT FOUND.		
	\$	\$



UNIT PRICE IN WRITING DOLLARS AND CENTS	UNIT PRICE	TOTAL ITEM BID
5.8.5c 80 TON ERROR! REFERENCE SOURCE NOT FOUND.		
	\$	\$
UNIT PRICE IN WRITING DOLLARS AND CENTS	UNIT PRICE	TOTAL ITEM BID
5.8.5d 48 TON ERROR! REFERENCE SOURCE NOT FOUND.		
	\$	\$
UNIT PRICE IN WRITING DOLLARS AND CENTS	UNIT PRICE	TOTAL ITEM BID
5.9.7a C.Y. ERROR! REFERENCE SOURCE NOT FOUND.		
	\$	\$
UNIT PRICE IN WRITING DOLLARS AND CENTS	UNIT PRICE	TOTAL ITEM BID
5.9.7b C.Y. ERROR! REFERENCE SOURCE NOT FOUND.		
	\$	\$
UNIT PRICE IN WRITING DOLLARS AND CENTS	UNIT PRICE	TOTAL ITEM BID
5.9.7c C.Y. ERROR! REFERENCE SOURCE NOT FOUND.		
	\$	\$
UNIT PRICE IN WRITING DOLLARS AND CENTS	UNIT PRICE	TOTAL ITEM BID
5.9.7d C.Y. ERROR! REFERENCE SOURCE NOT FOUND.		
	\$	\$
UNIT PRICE IN WRITING DOLLARS AND CENTS	UNIT PRICE	TOTAL ITEM BID
5.9.7e S.Y. ERROR! REFERENCE SOURCE NOT FOUND.		
	\$	\$
UNIT PRICE IN WRITING DOLLARS AND CENTS	UNIT PRICE	TOTAL ITEM BID
5.9.7f S.Y. ERROR! REFERENCE SOURCE NOT FOUND.		
	\$	\$
UNIT PRICE IN WRITING DOLLARS AND CENTS	UNIT PRICE	TOTAL ITEM BID
5.9.7g S.Y. ERROR! REFERENCE SOURCE NOT FOUND.		
	\$	\$
UNIT PRICE IN WRITING DOLLARS AND CENTS	UNIT PRICE	TOTAL ITEM BID
5.9.7h S.Y. ERROR! REFERENCE SOURCE NOT FOUND.		
	\$	\$
UNIT PRICE IN WRITING DOLLARS AND CENTS	UNIT PRICE	TOTAL ITEM BID
6.1.9a L.F. ERROR! REFERENCE SOURCE NOT FOUND.		
	\$	\$
UNIT PRICE IN WRITING DOLLARS AND CENTS	UNIT PRICE	TOTAL ITEM BID
6.1.9b L.F. ERROR! REFERENCE SOURCE NOT FOUND.		
	\$	\$
UNIT PRICE IN WRITING DOLLARS AND CENTS	UNIT PRICE	TOTAL ITEM BID
6.1.9c L.F. ERROR! REFERENCE SOURCE NOT FOUND.		

		\$	\$
<b>UNIT PRICE IN WRITING DOLLARS AND CENTS</b>	<b>UNIT PRICE</b>	<b>TOTAL ITEM BID</b>	
6.1.9d	L.F.	<b>ERROR! REFERENCE SOURCE NOT FOUND.</b>	
		\$	\$
<b>UNIT PRICE IN WRITING DOLLARS AND CENTS</b>	<b>UNIT PRICE</b>	<b>TOTAL ITEM BID</b>	
6.1.9e	L.F.	<b>ERROR! REFERENCE SOURCE NOT FOUND.</b>	
		\$	\$
<b>UNIT PRICE IN WRITING DOLLARS AND CENTS</b>	<b>UNIT PRICE</b>	<b>TOTAL ITEM BID</b>	
6.1.9f	L.F.	<b>ERROR! REFERENCE SOURCE NOT FOUND.</b>	
		\$	\$
<b>UNIT PRICE IN WRITING DOLLARS AND CENTS</b>	<b>UNIT PRICE</b>	<b>TOTAL ITEM BID</b>	
6.1.9g	EA	<b>ERROR! REFERENCE SOURCE NOT FOUND.</b>	
		\$	\$
<b>UNIT PRICE IN WRITING DOLLARS AND CENTS</b>	<b>UNIT PRICE</b>	<b>TOTAL ITEM BID</b>	
6.2.4a	EA	<b>ERROR! REFERENCE SOURCE NOT FOUND.</b>	
		\$	\$
<b>UNIT PRICE IN WRITING DOLLARS AND CENTS</b>	<b>UNIT PRICE</b>	<b>TOTAL ITEM BID</b>	
6.2.4b	EA	<b>ERROR! REFERENCE SOURCE NOT FOUND.</b>	
		\$	\$
<b>UNIT PRICE IN WRITING DOLLARS AND CENTS</b>	<b>UNIT PRICE</b>	<b>TOTAL ITEM BID</b>	
6.3.5a	EA	<b>ERROR! REFERENCE SOURCE NOT FOUND.</b>	
		\$	\$
<b>UNIT PRICE IN WRITING DOLLARS AND CENTS</b>	<b>UNIT PRICE</b>	<b>TOTAL ITEM BID</b>	
6.3.5b	EA	<b>ERROR! REFERENCE SOURCE NOT FOUND.</b>	
		\$	\$
<b>UNIT PRICE IN WRITING DOLLARS AND CENTS</b>	<b>UNIT PRICE</b>	<b>TOTAL ITEM BID</b>	
6.3.5c	EA	<b>ERROR! REFERENCE SOURCE NOT FOUND.</b>	
		\$	\$
<b>UNIT PRICE IN WRITING DOLLARS AND CENTS</b>	<b>UNIT PRICE</b>	<b>TOTAL ITEM BID</b>	
6.3.5d	EA	<b>ERROR! REFERENCE SOURCE NOT FOUND.</b>	
		\$	\$
<b>UNIT PRICE IN WRITING DOLLARS AND CENTS</b>	<b>UNIT PRICE</b>	<b>TOTAL ITEM BID</b>	
6.3.5e	EA	<b>ERROR! REFERENCE SOURCE NOT FOUND.</b>	
		\$	\$
<b>UNIT PRICE IN WRITING DOLLARS AND CENTS</b>	<b>UNIT PRICE</b>	<b>TOTAL ITEM BID</b>	
6.3.5f	EA	<b>ERROR! REFERENCE SOURCE NOT FOUND.</b>	
		\$	\$
<b>UNIT PRICE IN WRITING DOLLARS AND CENTS</b>	<b>UNIT PRICE</b>	<b>TOTAL ITEM BID</b>	

6.3.5g EA **ERROR! REFERENCE SOURCE NOT FOUND.**

	\$	\$
<b>UNIT PRICE IN WRITING DOLLARS AND CENTS</b>	<b>UNIT PRICE</b>	<b>TOTAL ITEM BID</b>

6.4.4a EA **ERROR! REFERENCE SOURCE NOT FOUND.**

	\$	\$
<b>UNIT PRICE IN WRITING DOLLARS AND CENTS</b>	<b>UNIT PRICE</b>	<b>TOTAL ITEM BID</b>

6.5.3a EA **ERROR! REFERENCE SOURCE NOT FOUND.**

	\$	\$
<b>UNIT PRICE IN WRITING DOLLARS AND CENTS</b>	<b>UNIT PRICE</b>	<b>TOTAL ITEM BID</b>

6.6.3a EA **ERROR! REFERENCE SOURCE NOT FOUND.**

	\$	\$
<b>UNIT PRICE IN WRITING DOLLARS AND CENTS</b>	<b>UNIT PRICE</b>	<b>TOTAL ITEM BID</b>

6.7.6a EA **ERROR! REFERENCE SOURCE NOT FOUND.**

	\$	\$
<b>UNIT PRICE IN WRITING DOLLARS AND CENTS</b>	<b>UNIT PRICE</b>	<b>TOTAL ITEM BID</b>

6.7.6b EA **ERROR! REFERENCE SOURCE NOT FOUND.**

	\$	\$
<b>UNIT PRICE IN WRITING DOLLARS AND CENTS</b>	<b>UNIT PRICE</b>	<b>TOTAL ITEM BID</b>

6.7.6c EA **ERROR! REFERENCE SOURCE NOT FOUND.**

	\$	\$
<b>UNIT PRICE IN WRITING DOLLARS AND CENTS</b>	<b>UNIT PRICE</b>	<b>TOTAL ITEM BID</b>

6.8.3a L.S. **ERROR! REFERENCE SOURCE NOT FOUND.**

	\$	\$
<b>UNIT PRICE IN WRITING DOLLARS AND CENTS</b>	<b>UNIT PRICE</b>	<b>TOTAL ITEM BID</b>

6.9.3a L.S. **ERROR! REFERENCE SOURCE NOT FOUND.**

	\$	\$
<b>UNIT PRICE IN WRITING DOLLARS AND CENTS</b>	<b>UNIT PRICE</b>	<b>TOTAL ITEM BID</b>

6.10.1a EA **ERROR! REFERENCE SOURCE NOT FOUND.**

	\$	\$
<b>UNIT PRICE IN WRITING DOLLARS AND CENTS</b>	<b>UNIT PRICE</b>	<b>TOTAL ITEM BID</b>

7.1.6a L.F. **ERROR! REFERENCE SOURCE NOT FOUND.**

	\$	\$
<b>UNIT PRICE IN WRITING DOLLARS AND CENTS</b>	<b>UNIT PRICE</b>	<b>TOTAL ITEM BID</b>

7.1.6b L.F. **ERROR! REFERENCE SOURCE NOT FOUND.**

	\$	\$
<b>UNIT PRICE IN WRITING DOLLARS AND CENTS</b>	<b>UNIT PRICE</b>	<b>TOTAL ITEM BID</b>

7.1.6c L.F. **ERROR! REFERENCE SOURCE NOT FOUND.**

	\$	\$
--	----	----

		<b>UNIT PRICE IN WRITING DOLLARS AND CENTS</b>	<b>UNIT PRICE</b>	<b>TOTAL ITEM BID</b>
7.1.6d	L.F.	<b>ERROR! REFERENCE SOURCE NOT FOUND.</b>		
			\$	\$
		<b>UNIT PRICE IN WRITING DOLLARS AND CENTS</b>	<b>UNIT PRICE</b>	<b>TOTAL ITEM BID</b>
7.1.6e	L.F.	<b>ERROR! REFERENCE SOURCE NOT FOUND.</b>		
			\$	\$
		<b>UNIT PRICE IN WRITING DOLLARS AND CENTS</b>	<b>UNIT PRICE</b>	<b>TOTAL ITEM BID</b>
7.1.6f	L.F.	<b>ERROR! REFERENCE SOURCE NOT FOUND.</b>		
			\$	\$
		<b>UNIT PRICE IN WRITING DOLLARS AND CENTS</b>	<b>UNIT PRICE</b>	<b>TOTAL ITEM BID</b>
7.1.6g	EA	<b>ERROR! REFERENCE SOURCE NOT FOUND.</b>		
			\$	\$
		<b>UNIT PRICE IN WRITING DOLLARS AND CENTS</b>	<b>UNIT PRICE</b>	<b>TOTAL ITEM BID</b>
7.1.6h	EA	<b>ERROR! REFERENCE SOURCE NOT FOUND.</b>		
			\$	\$
		<b>UNIT PRICE IN WRITING DOLLARS AND CENTS</b>	<b>UNIT PRICE</b>	<b>TOTAL ITEM BID</b>
7.2.6a	L.F.	<b>ERROR! REFERENCE SOURCE NOT FOUND.</b>		
			\$	\$
		<b>UNIT PRICE IN WRITING DOLLARS AND CENTS</b>	<b>UNIT PRICE</b>	<b>TOTAL ITEM BID</b>
7.2.6b	L.F.	<b>ERROR! REFERENCE SOURCE NOT FOUND.</b>		
			\$	\$
		<b>UNIT PRICE IN WRITING DOLLARS AND CENTS</b>	<b>UNIT PRICE</b>	<b>TOTAL ITEM BID</b>
7.2.6c	L.F.	<b>ERROR! REFERENCE SOURCE NOT FOUND.</b>		
			\$	\$
		<b>UNIT PRICE IN WRITING DOLLARS AND CENTS</b>	<b>UNIT PRICE</b>	<b>TOTAL ITEM BID</b>
7.2.6d	L.F.	<b>ERROR! REFERENCE SOURCE NOT FOUND.</b>		
			\$	\$
		<b>UNIT PRICE IN WRITING DOLLARS AND CENTS</b>	<b>UNIT PRICE</b>	<b>TOTAL ITEM BID</b>
7.3.10a	EA	<b>ERROR! REFERENCE SOURCE NOT FOUND.</b>		
			\$	\$
		<b>UNIT PRICE IN WRITING DOLLARS AND CENTS</b>	<b>UNIT PRICE</b>	<b>TOTAL ITEM BID</b>
7.3.10b	EA	<b>ERROR! REFERENCE SOURCE NOT FOUND.</b>		
			\$	\$
		<b>UNIT PRICE IN WRITING DOLLARS AND CENTS</b>	<b>UNIT PRICE</b>	<b>TOTAL ITEM BID</b>
7.3.10c	EA	<b>ERROR! REFERENCE SOURCE NOT FOUND.</b>		
			\$	\$
		<b>UNIT PRICE IN WRITING DOLLARS AND CENTS</b>	<b>UNIT PRICE</b>	<b>TOTAL ITEM BID</b>
7.3.10d	EA	<b>ERROR! REFERENCE SOURCE NOT FOUND.</b>		
			\$	\$
		<b>UNIT PRICE IN WRITING DOLLARS AND CENTS</b>	<b>UNIT PRICE</b>	<b>TOTAL ITEM BID</b>

7.4.10a EA **ERROR! REFERENCE SOURCE NOT FOUND.**

	\$	\$
<b>UNIT PRICE IN WRITING DOLLARS AND CENTS</b>	<b>UNIT PRICE</b>	<b>TOTAL ITEM BID</b>

7.4.10b EA **ERROR! REFERENCE SOURCE NOT FOUND.**

	\$	\$
<b>UNIT PRICE IN WRITING DOLLARS AND CENTS</b>	<b>UNIT PRICE</b>	<b>TOTAL ITEM BID</b>

7.4.10c EA **ERROR! REFERENCE SOURCE NOT FOUND.**

	\$	\$
<b>UNIT PRICE IN WRITING DOLLARS AND CENTS</b>	<b>UNIT PRICE</b>	<b>TOTAL ITEM BID</b>

7.4.10d EA **ERROR! REFERENCE SOURCE NOT FOUND.**

	\$	\$
<b>UNIT PRICE IN WRITING DOLLARS AND CENTS</b>	<b>UNIT PRICE</b>	<b>TOTAL ITEM BID</b>

7.4.10e EA **ERROR! REFERENCE SOURCE NOT FOUND.**

	\$	\$
<b>UNIT PRICE IN WRITING DOLLARS AND CENTS</b>	<b>UNIT PRICE</b>	<b>TOTAL ITEM BID</b>

7.4.10f EA **ERROR! REFERENCE SOURCE NOT FOUND.**

	\$	\$
<b>UNIT PRICE IN WRITING DOLLARS AND CENTS</b>	<b>UNIT PRICE</b>	<b>TOTAL ITEM BID</b>

7.4.10g EA **ERROR! REFERENCE SOURCE NOT FOUND.**

	\$	\$
<b>UNIT PRICE IN WRITING DOLLARS AND CENTS</b>	<b>UNIT PRICE</b>	<b>TOTAL ITEM BID</b>

7.5.5a EA **ERROR! REFERENCE SOURCE NOT FOUND.**

	\$	\$
<b>UNIT PRICE IN WRITING DOLLARS AND CENTS</b>	<b>UNIT PRICE</b>	<b>TOTAL ITEM BID</b>

7.5.5b V.F. **ERROR! REFERENCE SOURCE NOT FOUND.**

	\$	\$
<b>UNIT PRICE IN WRITING DOLLARS AND CENTS</b>	<b>UNIT PRICE</b>	<b>TOTAL ITEM BID</b>

7.5.5c EA **ERROR! REFERENCE SOURCE NOT FOUND.**

	\$	\$
<b>UNIT PRICE IN WRITING DOLLARS AND CENTS</b>	<b>UNIT PRICE</b>	<b>TOTAL ITEM BID</b>

7.5.5d EA **ERROR! REFERENCE SOURCE NOT FOUND.**

	\$	\$
<b>UNIT PRICE IN WRITING DOLLARS AND CENTS</b>	<b>UNIT PRICE</b>	<b>TOTAL ITEM BID</b>

7.5.5e EA **ERROR! REFERENCE SOURCE NOT FOUND.**

	\$	\$
<b>UNIT PRICE IN WRITING DOLLARS AND CENTS</b>	<b>UNIT PRICE</b>	<b>TOTAL ITEM BID</b>

7.5.5f EA **ERROR! REFERENCE SOURCE NOT FOUND.**

	\$	\$
<b>UNIT PRICE IN WRITING DOLLARS AND CENTS</b>	<b>UNIT PRICE</b>	<b>TOTAL ITEM BID</b>

7.5.5g EA **ERROR! REFERENCE SOURCE NOT FOUND.**

--	--	--

			\$	\$
<b>UNIT PRICE IN WRITING DOLLARS AND CENTS</b>			<b>UNIT PRICE</b>	<b>TOTAL ITEM BID</b>
7.5.5h	EA	<b>ERROR! REFERENCE SOURCE NOT FOUND.</b>		
			\$	\$
<b>UNIT PRICE IN WRITING DOLLARS AND CENTS</b>			<b>UNIT PRICE</b>	<b>TOTAL ITEM BID</b>
7.5.5i	EA	<b>Error! Reference source not found.</b>		
			\$	\$
<b>UNIT PRICE IN WRITING DOLLARS AND CENTS</b>			<b>UNIT PRICE</b>	<b>TOTAL ITEM BID</b>
7.5.5j	EA	<b>ERROR! REFERENCE SOURCE NOT FOUND.</b>		
			\$	\$
<b>UNIT PRICE IN WRITING DOLLARS AND CENTS</b>			<b>UNIT PRICE</b>	<b>TOTAL ITEM BID</b>
7.5.5k	EA	<b>ERROR! REFERENCE SOURCE NOT FOUND.</b>		
			\$	\$
<b>UNIT PRICE IN WRITING DOLLARS AND CENTS</b>			<b>UNIT PRICE</b>	<b>TOTAL ITEM BID</b>
7.5.5l	EA	<b>ERROR! REFERENCE SOURCE NOT FOUND.</b>		
			\$	\$
<b>UNIT PRICE IN WRITING DOLLARS AND CENTS</b>			<b>UNIT PRICE</b>	<b>TOTAL ITEM BID</b>
7.5.5m	EA	<b>ERROR! REFERENCE SOURCE NOT FOUND.</b>		
			\$	\$
<b>UNIT PRICE IN WRITING DOLLARS AND CENTS</b>			<b>UNIT PRICE</b>	<b>TOTAL ITEM BID</b>
8.1.10a 600	L.F.	<b>PIPE INSULATION, ALL SIZES</b>		
			\$	\$
<b>UNIT PRICE IN WRITING DOLLARS AND CENTS</b>			<b>UNIT PRICE</b>	<b>TOTAL ITEM BID</b>
8.1.10a2 100	L.F.	<b>PIPE INSULATION, ALL SIZESALL SIZES</b>		
			\$	\$
<b>UNIT PRICE IN WRITING DOLLARS AND CENTS</b>			<b>UNIT PRICE</b>	<b>TOTAL ITEM BID</b>
8.1.10b	L.F.	<b>ERROR! REFERENCE SOURCE NOT FOUND.</b>		
			\$	\$
<b>UNIT PRICE IN WRITING DOLLARS AND CENTS</b>			<b>UNIT PRICE</b>	<b>TOTAL ITEM BID</b>
8.1.10c	C.Y.	<b>ERROR! REFERENCE SOURCE NOT FOUND.</b>		
			\$	\$
<b>UNIT PRICE IN WRITING DOLLARS AND CENTS</b>			<b>UNIT PRICE</b>	<b>TOTAL ITEM BID</b>
8.1.10d	EA	<b>ERROR! REFERENCE SOURCE NOT FOUND.</b>		
			\$	\$
<b>UNIT PRICE IN WRITING DOLLARS AND CENTS</b>			<b>UNIT PRICE</b>	<b>TOTAL ITEM BID</b>
8.1.10e 1	EA	<b>ERROR! REFERENCE SOURCE NOT FOUND.</b>		
			\$	\$
<b>UNIT PRICE IN WRITING DOLLARS AND CENTS</b>			<b>UNIT PRICE</b>	<b>TOTAL ITEM BID</b>

8.1.10f 1 L.S. ERROR! REFERENCE SOURCE NOT FOUND.

	\$	\$
<b>UNIT PRICE IN WRITING DOLLARS AND CENTS</b>	<b>UNIT PRICE</b>	<b>TOTAL ITEM BID</b>

8.2.13a 1 EA ERROR! REFERENCE SOURCE NOT FOUND.

	\$	\$
<b>UNIT PRICE IN WRITING DOLLARS AND CENTS</b>	<b>UNIT PRICE</b>	<b>TOTAL ITEM BID</b>

8.2.13b EA ERROR! REFERENCE SOURCE NOT FOUND.

	\$	\$
<b>UNIT PRICE IN WRITING DOLLARS AND CENTS</b>	<b>UNIT PRICE</b>	<b>TOTAL ITEM BID</b>

8.2.13c 1 EA ERROR! REFERENCE SOURCE NOT FOUND.

	\$	\$
<b>UNIT PRICE IN WRITING DOLLARS AND CENTS</b>	<b>UNIT PRICE</b>	<b>TOTAL ITEM BID</b>

8.2.13d EA ERROR! REFERENCE SOURCE NOT FOUND.

	\$	\$
<b>UNIT PRICE IN WRITING DOLLARS AND CENTS</b>	<b>UNIT PRICE</b>	<b>TOTAL ITEM BID</b>

8.2.13e EA ERROR! REFERENCE SOURCE NOT FOUND.

	\$	\$
<b>UNIT PRICE IN WRITING DOLLARS AND CENTS</b>	<b>UNIT PRICE</b>	<b>TOTAL ITEM BID</b>

8.2.13f 2 EA ERROR! REFERENCE SOURCE NOT FOUND.

	\$	\$
<b>UNIT PRICE IN WRITING DOLLARS AND CENTS</b>	<b>UNIT PRICE</b>	<b>TOTAL ITEM BID</b>

8.2.13g EA ERROR! REFERENCE SOURCE NOT FOUND.

	\$	\$
<b>UNIT PRICE IN WRITING DOLLARS AND CENTS</b>	<b>UNIT PRICE</b>	<b>TOTAL ITEM BID</b>

8.2.13h EA ERROR! REFERENCE SOURCE NOT FOUND.

	\$	\$
<b>UNIT PRICE IN WRITING DOLLARS AND CENTS</b>	<b>UNIT PRICE</b>	<b>TOTAL ITEM BID</b>

8.2.13i EA ERROR! REFERENCE SOURCE NOT FOUND.

	\$	\$
<b>UNIT PRICE IN WRITING DOLLARS AND CENTS</b>	<b>UNIT PRICE</b>	<b>TOTAL ITEM BID</b>

8.2.13j EA ERROR! REFERENCE SOURCE NOT FOUND.

	\$	\$
<b>UNIT PRICE IN WRITING DOLLARS AND CENTS</b>	<b>UNIT PRICE</b>	<b>TOTAL ITEM BID</b>

8.3.4a L.F. ERROR! REFERENCE SOURCE NOT FOUND.

	\$	\$
<b>UNIT PRICE IN WRITING DOLLARS AND CENTS</b>	<b>UNIT PRICE</b>	<b>TOTAL ITEM BID</b>

8.3.4b 2 EA ERROR! REFERENCE SOURCE NOT FOUND.

	\$	\$
<b>UNIT PRICE IN WRITING DOLLARS AND CENTS</b>	<b>UNIT PRICE</b>	<b>TOTAL ITEM BID</b>

8.4.5a L.S. **ERROR! REFERENCE SOURCE NOT FOUND.**

	\$	\$
<b>UNIT PRICE IN WRITING DOLLARS AND CENTS</b>	<b>UNIT PRICE</b>	<b>TOTAL ITEM BID</b>

8.4.5b 90 L.F. **ERROR! REFERENCE SOURCE NOT FOUND.**

	\$	\$
<b>UNIT PRICE IN WRITING DOLLARS AND CENTS</b>	<b>UNIT PRICE</b>	<b>TOTAL ITEM BID</b>

8.4.5c EA **ERROR! REFERENCE SOURCE NOT FOUND.**

	\$	\$
<b>UNIT PRICE IN WRITING DOLLARS AND CENTS</b>	<b>UNIT PRICE</b>	<b>TOTAL ITEM BID</b>

8.5.7a L.F. **ERROR! REFERENCE SOURCE NOT FOUND.**

	\$	\$
<b>UNIT PRICE IN WRITING DOLLARS AND CENTS</b>	<b>UNIT PRICE</b>	<b>TOTAL ITEM BID</b>

8.5.7b L.F. **ERROR! REFERENCE SOURCE NOT FOUND.**

	\$	\$
<b>UNIT PRICE IN WRITING DOLLARS AND CENTS</b>	<b>UNIT PRICE</b>	<b>TOTAL ITEM BID</b>

8.5.7c L.F. **ERROR! REFERENCE SOURCE NOT FOUND.**

	\$	\$
<b>UNIT PRICE IN WRITING DOLLARS AND CENTS</b>	<b>UNIT PRICE</b>	<b>TOTAL ITEM BID</b>

8.6.11a L.F. **ERROR! REFERENCE SOURCE NOT FOUND.**

	\$	\$
<b>UNIT PRICE IN WRITING DOLLARS AND CENTS</b>	<b>UNIT PRICE</b>	<b>TOTAL ITEM BID</b>

8.7.15a L.F. **ERROR! REFERENCE SOURCE NOT FOUND.**

	\$	\$
<b>UNIT PRICE IN WRITING DOLLARS AND CENTS</b>	<b>UNIT PRICE</b>	<b>TOTAL ITEM BID</b>

8.7.15b EA **ERROR! REFERENCE SOURCE NOT FOUND.**

	\$	\$
<b>UNIT PRICE IN WRITING DOLLARS AND CENTS</b>	<b>UNIT PRICE</b>	<b>TOTAL ITEM BID</b>

N/A N/A N/A

	\$	\$
<b>UNIT PRICE IN WRITING DOLLARS AND CENTS</b>	<b>UNIT PRICE</b>	<b>TOTAL ITEM BID</b>

N/A N/A N/A

	\$	\$
<b>UNIT PRICE IN WRITING DOLLARS AND CENTS</b>	<b>UNIT PRICE</b>	<b>TOTAL ITEM BID</b>

n/a N/A N/A

	\$	\$
<b>UNIT PRICE IN WRITING DOLLARS AND CENTS</b>	<b>UNIT PRICE</b>	<b>TOTAL ITEM BID</b>

8.10.11a V.F. **ERROR! REFERENCE SOURCE NOT FOUND.**

	\$	\$
<b>UNIT PRICE IN WRITING DOLLARS AND CENTS</b>	<b>UNIT PRICE</b>	<b>TOTAL ITEM BID</b>



9.1.19a 1200 LF SAWCUTTING CEMENTITIOUS & BITUMINOUS CONCRETE

	\$	\$
<b>UNIT PRICE IN WRITING DOLLARS AND CENTS</b>	<b>UNIT PRICE</b>	<b>TOTAL ITEM BID</b>

9.1.19b 10 GAL BITUMEN FOR TACK COAT

	\$	\$
<b>UNIT PRICE IN WRITING DOLLARS AND CENTS</b>	<b>UNIT PRICE</b>	<b>TOTAL ITEM BID</b>

9.1.19c EA CASTING ADJUSTMENT — LARGE

	\$	\$
<b>UNIT PRICE IN WRITING DOLLARS AND CENTS</b>	<b>UNIT PRICE</b>	<b>TOTAL ITEM BID</b>

9.1.19d EA CASTING ADJUSTMENT — SMALL

	\$	\$
<b>UNIT PRICE IN WRITING DOLLARS AND CENTS</b>	<b>UNIT PRICE</b>	<b>TOTAL ITEM BID</b>

9.1.19e L.F. WIRE LOOP DETECTOR

	\$	\$
<b>UNIT PRICE IN WRITING DOLLARS AND CENTS</b>	<b>UNIT PRICE</b>	<b>TOTAL ITEM BID</b>

9.1.19f EA RELOCATE/ADJUST HYDRANT

	\$	\$
<b>UNIT PRICE IN WRITING DOLLARS AND CENTS</b>	<b>UNIT PRICE</b>	<b>TOTAL ITEM BID</b>

9.1.19g C.Y. NEW STONE MASONRY RETAINING WALL REMOVED & RESET

	\$	\$
<b>UNIT PRICE IN WRITING DOLLARS AND CENTS</b>	<b>UNIT PRICE</b>	<b>TOTAL ITEM BID</b>

9.1.19h C.Y. NEW STONE MASONRY RETAINING WALL

	\$	\$
<b>UNIT PRICE IN WRITING DOLLARS AND CENTS</b>	<b>UNIT PRICE</b>	<b>TOTAL ITEM BID</b>

9.1.19i L.F. FENCE REMOVED & RESET

	\$	\$
<b>UNIT PRICE IN WRITING DOLLARS AND CENTS</b>	<b>UNIT PRICE</b>	<b>TOTAL ITEM BID</b>

9.1.19j EA STONE BOUND REMOVED & STACKED

	\$	\$
<b>UNIT PRICE IN WRITING DOLLARS AND CENTS</b>	<b>UNIT PRICE</b>	<b>TOTAL ITEM BID</b>

9.2.3a C.Y. GRAVEL SUB-BASE COURSE

	\$	\$
<b>UNIT PRICE IN WRITING DOLLARS AND CENTS</b>	<b>UNIT PRICE</b>	<b>TOTAL ITEM BID</b>

9.3.3a C.Y. GRAVEL BASE COURSE

	\$	\$
<b>UNIT PRICE IN WRITING DOLLARS AND CENTS</b>	<b>UNIT PRICE</b>	<b>TOTAL ITEM BID</b>

9.4.3a S.Y. RECLAIMED BASE COURSE

	\$	\$
<b>UNIT PRICE IN WRITING DOLLARS AND CENTS</b>	<b>UNIT PRICE</b>	<b>TOTAL ITEM BID</b>

9.5.3a	TON	CLASS I BITUMINOUS CONCRETE BINDER COURSE — TYPE I-1			
			\$	\$	
			<b>UNIT PRICE IN WRITING DOLLARS AND CENTS</b>	<b>UNIT PRICE</b>	<b>TOTAL ITEM BID</b>
9.6.3a	TON	CLASS I BITUMINOUS CONCRETE TOP COURSE — TYPE I-1			
			\$	\$	
			<b>UNIT PRICE IN WRITING DOLLARS AND CENTS</b>	<b>UNIT PRICE</b>	<b>TOTAL ITEM BID</b>
9.7.3a	GAL	CRACK SEALING			
			\$	\$	
			<b>UNIT PRICE IN WRITING DOLLARS AND CENTS</b>	<b>UNIT PRICE</b>	<b>TOTAL ITEM BID</b>
9.7.3b	L.F.	CRACK SEALING			
			\$	\$	
			<b>UNIT PRICE IN WRITING DOLLARS AND CENTS</b>	<b>UNIT PRICE</b>	<b>TOTAL ITEM BID</b>
9.8.3a	S.Y.	ASPHALT-LATEX, STONE AGGREGATE SAM			
			\$	\$	
			<b>UNIT PRICE IN WRITING DOLLARS AND CENTS</b>	<b>UNIT PRICE</b>	<b>TOTAL ITEM BID</b>
9.8.3b	S.Y.	ASPHALT-LATEX, STONE AGGREGATE SAMI			
			\$	\$	
			<b>UNIT PRICE IN WRITING DOLLARS AND CENTS</b>	<b>UNIT PRICE</b>	<b>TOTAL ITEM BID</b>
9.9.3a	S.Y.	COLD PLANING (MILLING)			
			\$	\$	
			<b>UNIT PRICE IN WRITING DOLLARS AND CENTS</b>	<b>UNIT PRICE</b>	<b>TOTAL ITEM BID</b>
9.10.3a	L.F.	VERTICAL GRANITE CURB — STRAIGHT SECTION			
			\$	\$	
			<b>UNIT PRICE IN WRITING DOLLARS AND CENTS</b>	<b>UNIT PRICE</b>	<b>TOTAL ITEM BID</b>
9.10.3b	L.F.	VERTICAL GRANITE CURB — RADIUS SECTION			
			\$	\$	
			<b>UNIT PRICE IN WRITING DOLLARS AND CENTS</b>	<b>UNIT PRICE</b>	<b>TOTAL ITEM BID</b>
9.10.3c	EA	VERTICAL GRANITE CURB — 3'-RADIUS NOSE ROUNDING			
			\$	\$	
			<b>UNIT PRICE IN WRITING DOLLARS AND CENTS</b>	<b>UNIT PRICE</b>	<b>TOTAL ITEM BID</b>
9.10.3d	L.F.	CURB REMOVED & STACKED			
			\$	\$	
			<b>UNIT PRICE IN WRITING DOLLARS AND CENTS</b>	<b>UNIT PRICE</b>	<b>TOTAL ITEM BID</b>
9.11.3a	S.Y.	CONCRETE SIDEWALK			
			\$	\$	
			<b>UNIT PRICE IN WRITING DOLLARS AND CENTS</b>	<b>UNIT PRICE</b>	<b>TOTAL ITEM BID</b>
9.11.3b	S.Y.	CONCRETE HANDICAP RAMP			
			\$	\$	
			<b>UNIT PRICE IN WRITING DOLLARS AND CENTS</b>	<b>UNIT PRICE</b>	<b>TOTAL ITEM BID</b>

9.11.3c S.Y. CONCRETE DRIVEWAY APRON

	\$	\$
<b>UNIT PRICE IN WRITING DOLLARS AND CENTS</b>	<b>UNIT PRICE</b>	<b>TOTAL ITEM BID</b>

9.11.3d TON BITUMINOUS CONCRETE WALK SURFACE

	\$	\$
<b>UNIT PRICE IN WRITING DOLLARS AND CENTS</b>	<b>UNIT PRICE</b>	<b>TOTAL ITEM BID</b>

9.11.3e TON BITUMINOUS CONCRETE HANDICAP RAMP

	\$	\$
<b>UNIT PRICE IN WRITING DOLLARS AND CENTS</b>	<b>UNIT PRICE</b>	<b>TOTAL ITEM BID</b>

9.11.3f TON BITUMINOUS DRIVEWAY APRON

	\$	\$
<b>UNIT PRICE IN WRITING DOLLARS AND CENTS</b>	<b>UNIT PRICE</b>	<b>TOTAL ITEM BID</b>

9.12.3a S.Y. RECONSTRUCT EXISTING DRIVEWAYS

	\$	\$
<b>UNIT PRICE IN WRITING DOLLARS AND CENTS</b>	<b>UNIT PRICE</b>	<b>TOTAL ITEM BID</b>

9.12.3b S.Y. RECONSTRUCT CEMENT CONCRETE WALKWAY

	\$	\$
<b>UNIT PRICE IN WRITING DOLLARS AND CENTS</b>	<b>UNIT PRICE</b>	<b>TOTAL ITEM BID</b>

9.12.3c S.Y. RECONSTRUC FLAGSTONE WALKWAY

	\$	\$
<b>UNIT PRICE IN WRITING DOLLARS AND CENTS</b>	<b>UNIT PRICE</b>	<b>TOTAL ITEM BID</b>

9.12.3d S.Y. RECONSTRUCT BITUMINOUS CONCRETE WALKWAY

	\$	\$
<b>UNIT PRICE IN WRITING DOLLARS AND CENTS</b>	<b>UNIT PRICE</b>	<b>TOTAL ITEM BID</b>

9.12.3e S.Y. RECONSTRUCT BRICK WALKWAY

	\$	\$
<b>UNIT PRICE IN WRITING DOLLARS AND CENTS</b>	<b>UNIT PRICE</b>	<b>TOTAL ITEM BID</b>

9.13.3a L.F. GUARD RAILS — STEEL

	\$	\$
<b>UNIT PRICE IN WRITING DOLLARS AND CENTS</b>	<b>UNIT PRICE</b>	<b>TOTAL ITEM BID</b>

9.13.3b 30 L.F. GUARD RAILS — TIMBER

	\$	\$
<b>UNIT PRICE IN WRITING DOLLARS AND CENTS</b>	<b>UNIT PRICE</b>	<b>TOTAL ITEM BID</b>

9.13.3c 30 L.F. GUARD RAILS REMOVED & DISPOSED

	\$	\$
<b>UNIT PRICE IN WRITING DOLLARS AND CENTS</b>	<b>UNIT PRICE</b>	<b>TOTAL ITEM BID</b>

9.14.3a L.F. REFLECTORIZED PAINTED LINE, 4" WIDTH

	\$	\$
<b>UNIT PRICE IN WRITING DOLLARS AND CENTS</b>	<b>UNIT PRICE</b>	<b>TOTAL ITEM BID</b>

9.14.3b L.F. REFLECTORIZED THERMOPLASTIC LINE, 4" WIDTH

	\$	\$
<b>UNIT PRICE IN WRITING DOLLARS AND CENTS</b>	<b>UNIT PRICE</b>	<b>TOTAL ITEM BID</b>

9.14.3c L.F. REFLECTORIZED THERMOPLASTIC LINE, 12" WIDTH

	\$	\$
<b>UNIT PRICE IN WRITING DOLLARS AND CENTS</b>	<b>UNIT PRICE</b>	<b>TOTAL ITEM BID</b>

9.14.3d L.F. REFLECTORIZED THERMOPLASTIC LINE, 24" WIDTH

	\$	\$
<b>UNIT PRICE IN WRITING DOLLARS AND CENTS</b>	<b>UNIT PRICE</b>	<b>TOTAL ITEM BID</b>

9.14.3e S.F. PAVEMENT ARROW & LEGEND, PAINTED

	\$	\$
<b>UNIT PRICE IN WRITING DOLLARS AND CENTS</b>	<b>UNIT PRICE</b>	<b>TOTAL ITEM BID</b>

9.14.3f S.F. PAVEMENT ARROW & LEGEND, THERMOPLASTIC

	\$	\$
<b>UNIT PRICE IN WRITING DOLLARS AND CENTS</b>	<b>UNIT PRICE</b>	<b>TOTAL ITEM BID</b>

9.15.3a EA RELOCATE STREET SIGN

	\$	\$
<b>UNIT PRICE IN WRITING DOLLARS AND CENTS</b>	<b>UNIT PRICE</b>	<b>TOTAL ITEM BID</b>

9.15.3b S.F. NEW STREET SIGN

	\$	\$
<b>UNIT PRICE IN WRITING DOLLARS AND CENTS</b>	<b>UNIT PRICE</b>	<b>TOTAL ITEM BID</b>

9.15.3c EA NEW POST

	\$	\$
<b>UNIT PRICE IN WRITING DOLLARS AND CENTS</b>	<b>UNIT PRICE</b>	<b>TOTAL ITEM BID</b>

9.15.3d EA REMOVE & STACK SIGN

	\$	\$
<b>UNIT PRICE IN WRITING DOLLARS AND CENTS</b>	<b>UNIT PRICE</b>	<b>TOTAL ITEM BID</b>

9.15.3e EA REMOVE & RELOCATE PARKING METER

	\$	\$
<b>UNIT PRICE IN WRITING DOLLARS AND CENTS</b>	<b>UNIT PRICE</b>	<b>TOTAL ITEM BID</b>

9.16.3a S.F. INFRA-RED APPLICATION

	\$	\$
<b>UNIT PRICE IN WRITING DOLLARS AND CENTS</b>	<b>UNIT PRICE</b>	<b>TOTAL ITEM BID</b>

9.17.3a S.F. POT HOLE REPAIR

	\$	\$
<b>UNIT PRICE IN WRITING DOLLARS AND CENTS</b>	<b>UNIT PRICE</b>	<b>TOTAL ITEM BID</b>

9.18.3a EA PORTABLE CHANGEABLE MESSAGE SIGN

	\$	\$
<b>UNIT PRICE IN WRITING DOLLARS AND CENTS</b>	<b>UNIT PRICE</b>	<b>TOTAL ITEM BID</b>

9.19.3a 80 TON CLASS I TEMPORARY PAVEMENT COURSE, TYPE I-1

			\$	\$
UNIT PRICE IN WRITING DOLLARS AND CENTS			UNIT PRICE	TOTAL ITEM BID
9.20.2a	1 L.S.	PEDESTRIAN & VEHICLE MANAGEMENT, PER MUTCD ( MASS DOT PERMIT ONLY )		
UNIT PRICE IN WRITING DOLLARS AND CENTS			UNIT PRICE	TOTAL ITEM BID
9.21.2a	1 L.S.	TEMPORARY CONSTRUCTION & TRAFFIC CONTROL SIGNS ( MASS DOT PERMIT ONLY )		
UNIT PRICE IN WRITING DOLLARS AND CENTS			UNIT PRICE	TOTAL ITEM BID
9.22	L.F.	TYPE 2 HMA CURB		
UNIT PRICE IN WRITING DOLLARS AND CENTS			UNIT PRICE	TOTAL ITEM BID
10.13a	8 EA	TREE PROTECTION		
UNIT PRICE IN WRITING DOLLARS AND CENTS			UNIT PRICE	TOTAL ITEM BID
10.13b	EA	TREE MAINTENANCE		
UNIT PRICE IN WRITING DOLLARS AND CENTS			UNIT PRICE	TOTAL ITEM BID
10.13c	EA	TREE PRUNING (DIAMETER BETWEEN 3" AND 6")		
UNIT PRICE IN WRITING DOLLARS AND CENTS			UNIT PRICE	TOTAL ITEM BID
10.13d	EA	TREE PRUNING (DIAMETER BETWEEN 6" AND 12")		
UNIT PRICE IN WRITING DOLLARS AND CENTS			UNIT PRICE	TOTAL ITEM BID
10.13e	EA	TREE PRUNING (DIAMETER BETWEEN 12" AND 18")		
UNIT PRICE IN WRITING DOLLARS AND CENTS			UNIT PRICE	TOTAL ITEM BID
10.13f	EA	TREE PRUNING (DIAMETER BETWEEN 18" AND 24")		
UNIT PRICE IN WRITING DOLLARS AND CENTS			UNIT PRICE	TOTAL ITEM BID
10.13g	EA	TREE PRUNING (DIAMETER BETWEEN 24" AND 30")		
UNIT PRICE IN WRITING DOLLARS AND CENTS			UNIT PRICE	TOTAL ITEM BID
10.13h	EA	TREE PRUNING (DIAMETER GREATER THAN 30")		
UNIT PRICE IN WRITING DOLLARS AND CENTS			UNIT PRICE	TOTAL ITEM BID
10.13i	S.Y.	FERTILIZING TREES		

21DPW 145C

Walker Lane Sewer Extension

		\$	\$
<b>UNIT PRICE IN WRITING DOLLARS AND CENTS</b>	<b>UNIT PRICE</b>	<b>TOTAL ITEM BID</b>	
10.13j	S.Y.	MYCORRHIZAL INOCULATION OF TREET	
		\$	\$
<b>UNIT PRICE IN WRITING DOLLARS AND CENTS</b>	<b>UNIT PRICE</b>	<b>TOTAL ITEM BID</b>	
11.5.5a	C.Y.	PLANTING MULCH	
		\$	\$
<b>UNIT PRICE IN WRITING DOLLARS AND CENTS</b>	<b>UNIT PRICE</b>	<b>TOTAL ITEM BID</b>	
11.5.11a	C.Y.	TREE INSTALLED, COMPLETE IN PLACE	
		\$	\$
<b>UNIT PRICE IN WRITING DOLLARS AND CENTS</b>	<b>UNIT PRICE</b>	<b>TOTAL ITEM BID</b>	
11.5.11b 6	C.Y.	SHRUB INSTALLED, COMPLETE IN PLACE	
		\$	\$
<b>UNIT PRICE IN WRITING DOLLARS AND CENTS</b>	<b>UNIT PRICE</b>	<b>TOTAL ITEM BID</b>	
11.5.11c	C.Y.	TREE REMOVED & REPLANTED	
		\$	\$
<b>UNIT PRICE IN WRITING DOLLARS AND CENTS</b>	<b>UNIT PRICE</b>	<b>TOTAL ITEM BID</b>	
11.5.11d	EA	SHRUB REMOVED & REPLANTED	
		\$	\$
<b>UNIT PRICE IN WRITING DOLLARS AND CENTS</b>	<b>UNIT PRICE</b>	<b>TOTAL ITEM BID</b>	
11.6.10a	C.Y.	ON-SITE LOAM REHANDLED, SPREAD & COMPACTED	
		\$	\$
<b>UNIT PRICE IN WRITING DOLLARS AND CENTS</b>	<b>UNIT PRICE</b>	<b>TOTAL ITEM BID</b>	
11.6.10b	C.Y.	COMPOST HANDLED, SPREAD & COMPACTED	
		\$	\$
<b>UNIT PRICE IN WRITING DOLLARS AND CENTS</b>	<b>UNIT PRICE</b>	<b>TOTAL ITEM BID</b>	
11.6.10c 50	C.Y.	LOAM SPREAD & COMPACTED	
		\$	\$
<b>UNIT PRICE IN WRITING DOLLARS AND CENTS</b>	<b>UNIT PRICE</b>	<b>TOTAL ITEM BID</b>	
11.6.10d 60	S.Y.	SEEDING	
		\$	\$
<b>UNIT PRICE IN WRITING DOLLARS AND CENTS</b>	<b>UNIT PRICE</b>	<b>TOTAL ITEM BID</b>	
12.2.20a	L.S.	TRAFFIC CONTROL SIGNAL REMOVED & STACKED	
		\$	\$
<b>UNIT PRICE IN WRITING DOLLARS AND CENTS</b>	<b>UNIT PRICE</b>	<b>TOTAL ITEM BID</b>	
12.2.20b	L.S.	TRAFFIC SIGNAL TYPE 8DW (WITH 2 SPAIR BIU'S)	
		\$	\$
<b>UNIT PRICE IN WRITING DOLLARS AND CENTS</b>	<b>UNIT PRICE</b>	<b>TOTAL ITEM BID</b>	
12.2.20c	EA	PULL BOX 12"X12" (SD2.031)	
		\$	\$

<b>UNIT PRICE IN WRITING DOLLARS AND CENTS</b>			<b>UNIT PRICE</b>	<b>TOTAL ITEM BID</b>
12.2.20d	LF	3" ELECTRICAL CONDUIT (TYPE NM)		
			\$	\$
<b>UNIT PRICE IN WRITING DOLLARS AND CENTS</b>			<b>UNIT PRICE</b>	<b>TOTAL ITEM BID</b>
12.2.20e L.F. 2" ELECTRICAL CONDUIT (TYPE NM)				
			\$	\$
<b>UNIT PRICE IN WRITING DOLLARS AND CENTS</b>			<b>UNIT PRICE</b>	<b>TOTAL ITEM BID</b>
12.3.1	L.S.	R3-1 (ILL.) ILLUMINATED SIGN		
			\$	\$
<b>UNIT PRICE IN WRITING DOLLARS AND CENTS</b>			<b>UNIT PRICE</b>	<b>TOTAL ITEM BID</b>
12.3.2	L.S.	R3-2 (ILL.) ILLUMINATED SIGN		
			\$	\$
<b>UNIT PRICE IN WRITING DOLLARS AND CENTS</b>			<b>UNIT PRICE</b>	<b>TOTAL ITEM BID</b>
13.1.1a	EA	PEDESTRIAN LIGHT POLE		
			\$	\$
<b>UNIT PRICE IN WRITING DOLLARS AND CENTS</b>			<b>UNIT PRICE</b>	<b>TOTAL ITEM BID</b>
13.1.2a	EA	PEDESTRIAN LIGHTING LUMINAIRE		
			\$	\$
<b>UNIT PRICE IN WRITING DOLLARS AND CENTS</b>			<b>UNIT PRICE</b>	<b>TOTAL ITEM BID</b>
13.1.2b	EA	LIGHTED BOLLARDS		
			\$	\$
<b>UNIT PRICE IN WRITING DOLLARS AND CENTS</b>			<b>UNIT PRICE</b>	<b>TOTAL ITEM BID</b>
13.1.3a	EA	LIGHT POLE REMOVED & RESET		
			\$	\$
<b>UNIT PRICE IN WRITING DOLLARS AND CENTS</b>			<b>UNIT PRICE</b>	<b>TOTAL ITEM BID</b>
13.2.1a	EA	PEDESTRIAN LIGHT STANDARD FOUNDATION		
			\$	\$
<b>UNIT PRICE IN WRITING DOLLARS AND CENTS</b>			<b>UNIT PRICE</b>	<b>TOTAL ITEM BID</b>
13.4.1a	EA	PULL BOX, 12"x12" - SD2.031		
			\$	\$
<b>UNIT PRICE IN WRITING DOLLARS AND CENTS</b>			<b>UNIT PRICE</b>	<b>TOTAL ITEM BID</b>
13.5.1a	L.S.	WIRING, GROUNDING AND SERVICE CONNECTION		
			\$	\$
<b>UNIT PRICE IN WRITING DOLLARS AND CENTS</b>			<b>UNIT PRICE</b>	<b>TOTAL ITEM BID</b>
14.2.5a	GAL	DIESEL FUEL		
			\$	\$
<b>UNIT PRICE IN WRITING DOLLARS AND CENTS</b>			<b>UNIT PRICE</b>	<b>TOTAL ITEM BID</b>
14.2.5b	GAL	GASOLINE		
			\$	\$

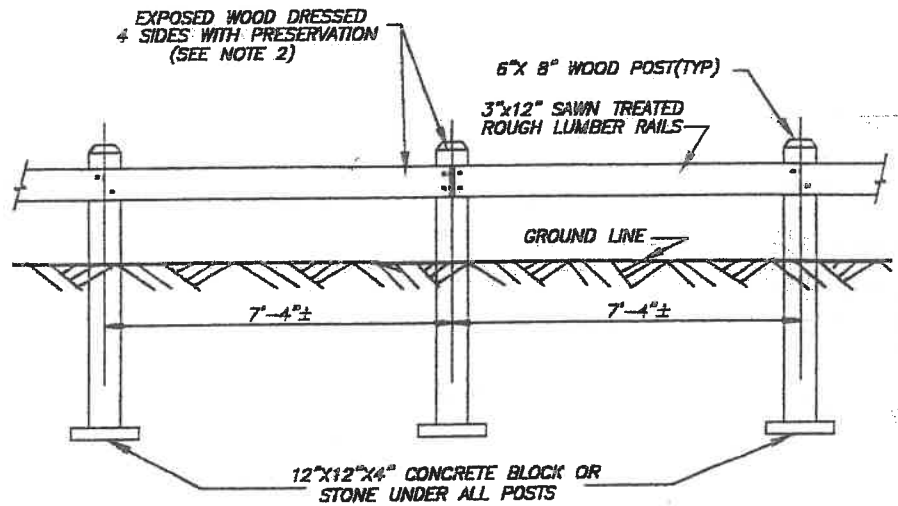
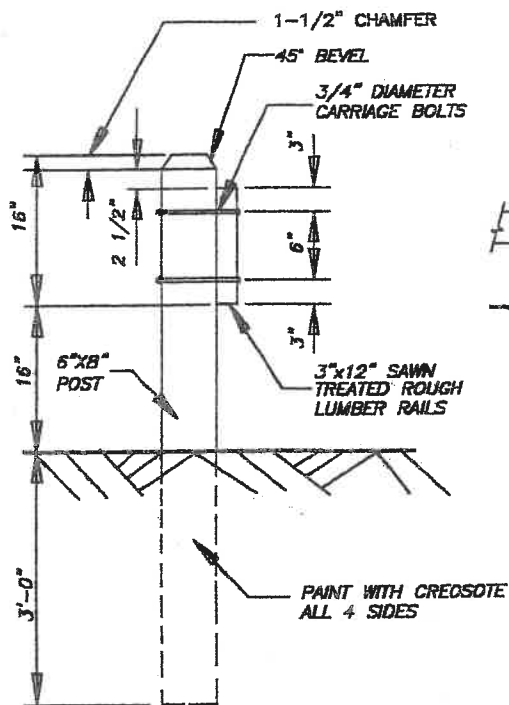
UNIT PRICE IN WRITING DOLLARS AND CENTS	UNIT PRICE	TOTAL ITEM BID
14.2.5c      TON      LIQUID ASPHALT		
	\$	\$
UNIT PRICE IN WRITING DOLLARS AND CENTS	UNIT PRICE	TOTAL ITEM BID
14.2.5d      LB      STRUCTURAL & REINFORCING STEEL		
	\$	\$
UNIT PRICE IN WRITING DOLLARS AND CENTS	UNIT PRICE	TOTAL ITEM BID
14.2.5e      TON      PORTLAND CEMENT IN CAST-IN-PLACE CONCRETE		
	\$	\$
UNIT PRICE IN WRITING DOLLARS AND CENTS	UNIT PRICE	TOTAL ITEM BID

TOTAL AMOUNT OF BID BASED ON ENGINEER'S ESTIMATE OF QUANTITIES:

_____	\$ _____
<b>TOTAL AMOUNT IN WRITING DOLLARS AND CENTS</b>	<b>DOLLARS</b>
_____	_____
<b>COMPANY NAME</b>	<b>ADDRESS</b>
_____	_____
<b>SIGNATURE</b>	<b>DATE</b>
_____	
<b>TITLE</b>	
_____	
<b>LICENSE NUMBER (IF APPLICABLE)</b>	
21DPW 145C	
Walker Lane Sewer Extension	







**NOTES:**

1. POST SPACING OF 7'-4" ALLOWS USES OF 8'-0" TIMBER RAILS FOR CONSTRUCTION. USE THIS FOR MAXIMUM SPACING.
2. EXPOSED TIMBERS TO BE DRESSED WITH A PRESEVATION CONTAINING PENTACHLOROPHENAL CONFORMING TO AWWA STANDARDS FOR LUMBER, TIMBERS, BRIDGE TIES AND MINE TIES- PRESERVATION TREATMENT BY PRESSURE PROCESS, DESIGNATION C2-73.
3. POSTS SHALL BE SELECT STRUCTURAL DOUGLAS FIR OR SELECT STRUCTURAL SPRUCE, WELL-SEASONED, STRAIGHT GRAINED, SOUND AND PLANED ON ALL SIDES.
4. RAILS AND BRACES SHALL BE SELECT STRUCTURAL LONGLEAF YELLOW PINE OR SELECT STRUCTURAL DOUGLAS FIR WELL-SEASONED, STRAIGHT-GRAINED, SOUND, PLANED ON ALL SIDES AND FREE FROM LOOSE AND UNSOUND KNOTS.

**TIMBER GUARD RAIL DETAIL**

NOT TO SCALE



## PERSONS RECEIVING BIDDING DOCUMENTS

Awarding Authority: Town Manager	Project Estimate: \$200,000
AGENCY: Town of Needham Public Works Dept. 500 Dedham Ave Needham, MA 02492	PROJECT NUMBER: IFB 21DPW-145C PROJECT: Walker Lane Sewer Extension Phone: 781-455-7550 Fax: 781-449-9023

Contact: Cecilia Simchak, Director of Fin &amp; Admin. Ext. 366

**Yes 5% Bid Deposit - No Mail - No Fax - "Free" Specs @ [www.needhamma.gov](http://www.needhamma.gov)**

1. N. Granese & Sons Inc. 59 Jefferson Ave. LOT 1/14/21 Salem, MA 01970 Steven Granese, Pres. PH: 781.592.8121 FX: 781.631.8466 EM: info@ngranese.com	8. D'Allessandro Corp. 254 Pleasant St. LOT 1/18/21 West Bridgewater, MA 02379 Timothy Parlato, Asst. Proj Mgr. PH: 508.559.6400 FX: 508.559.6432 EM: tparlato@dallessandro.com
2. Solimini Excavation & Utilities 54 Dr Braley Road LOT 1/14/21 East Freetown, MA 02717 Joseph Solimini, Owner PH: 781.844.4541 FX: None EM: soliminiexcavation@gmail.com	9. Projectdog 18 Graf Rd, #8 LOT 1/19/21 Newburyport, MA 01950 Ali Didion, Project Leads PH: 978.499.9014 FX: 978.499.9016 EM: addenda@projectdog.com
3. Massachusetts Bid Network North America Procurement Council (NAPC) Archie Mamasao, Admin. LOT 1/15/21 PH: 970-773-7006 Ext. 115 FX: 302-450-1925 EM: archie@nadc.me & bids@nadc.me	10. Jones Contracting Inc. 735 Washington St. LOT 1/19/21 Walpole, MA 02081 Kathy Luongo, Admin PH: 508.668.7888 FX: 508.668.7880 EM: info@jonescontractinginc.com
4. Celco Construction Corp. 38 Mountain Ash Lane LOT 1/15/21 Pembroke, MA 02359 Joe DiPetro, Sales Rep. PH: 781.331.6521 FX: None EM: jrd@celcocorp.com	11. N. Cibotti Inc. 79 Roc Sam Park Road LOT 1/19/21 Braintree, MA 02184 Benjamin R Cibotti Jr., Pres. PH: 781.843.2382 FX: 781.843.0281 EM: b.cibotti@verizon.net
5. AD Paolini LLC 103 Adams St. LOT 1/15/21 Newton, MA 02458 Paula Paolini, BD Coordinator PH: 617.454.4277 FX: 617.916.0441 EM: paula@adpaolini.com	12. JC Ferreira Construction Inc. 1269 Main St. LOT 1/19/21 Leominster, MA 01453 Paul Ferreira, Pres. PH: 978.728.3840 FX: None EM: paul.ferreira@jcferreraconstruction.com
6. Joseph P. Cardillo & Son Inc. 1 Melvin St, Unit C LOT 1/15/21 Wakefield, MA 01880 Maura Sarnaglia, Admin. PH: 978.857.1051 FX: 781.245.3478 EM: maura@jpcardillo.com	13. Vortex Services LLC 521 Federal Rd LOT 1/22/21 Livermore, ME 04253 Abigail Guerett, Admin PH: 207.897.3348 FX: 207.897.3627 EM: abigail.guerette@vortexservices.com
7. Oliveira Construction Inc. 1100 G.A.R. Highway LOT 1/16/21 Somerset, MA 02726 Michael Oliveira, Pres. PH: 508.672.4598 FX: 508.672.4599 EM: oliveira80@msn.com	14. J.M. Shaw Construction Corp. 61 Progressive Ave. LOT 1/22/21 W. Bridgewater, MA 02379 Paid \$25. Check Jeff Shaw, President PH: 508.580.4577 FX: Same as above EM: jmshaws@verizon.net

## PERSONS RECEIVING BIDDING DOCUMENTS

Awarding Authority: Town Manager	Project Estimate: \$200,000
AGENCY: Town of Needham Public Works Dept. 500 Dedham Ave Needham, MA 02492	PROJECT NUMBER: IFB 21DPW-145C PROJECT: Walker Lane Sewer Extension Phone: 781-455-7550 Fax: 781-449-9023

Contact: Cecilia Simchak, Director of Fin &amp; Admin. Ext. 366

Yes 5% Bid Deposit - No Mail - No Fax - "Free" Specs @ [www.needhamma.gov](http://www.needhamma.gov)

15. Aqualine Utility Inc. 1283 Washington St            LOT 1/22/21 Weymouth, MA 02189 Kenny Sylva, Asst. Project Mgr. PH: 508.690.2009 FX: 508.456.1305 EM: bids@aqualineutility.com	22
16. CJP & Sons Construction Co Inc. 1420 Main St.                    LOT 1/25/21 Millis, MA 02054 Bill Irwin, Engineer PH: 508.335.7263 FX: 508.376.8921 EM: Irwin_Williamg@hotmail.com	23
17. CN Corp. 106 Richmond Rd                LOT 1/25/21 Assonet, MA 02702 Mario Sousa, Pres. PH: 509.644.9988 FX: 508.644.9980 EM: cncorp98@gmail.com	24
18. Fed Corp. 1039 East St.                    LOT 1/26/21 Dedham, MA 02026 Lester Valente, Chief Engr PH: 781.329.1044 FX: 781.329.1039 EM: Lester@fedcorponline.com	25
19. Commonwealth Construction & Utilities, Inc. PO Box 972                        LOT 1/27/21 Watertown, MA 02472 Christopher Distefano, Sales Rep. PH: 978.938.4888 FX: 978.938.4889 EM: ccuinc@yahoo.com	26
20. N & M Excavating 1250 Long Pond Road            LOT 1/27/21 Brewster, MA 02631 Robert Murray, Sales Rep. PH: 774.801.8478 FX: None EM: robert@nmexcavating.com	27
21. Revoli Construction Co Inc. 90 Earls Way                    LOT 1/28/21 Franklin, MA 02038 Jill Cunningham, Admin PH: 508.520.2350 FX: 508.520.2355 EM: jillc@revoliconst.com	28