

PHOTOS



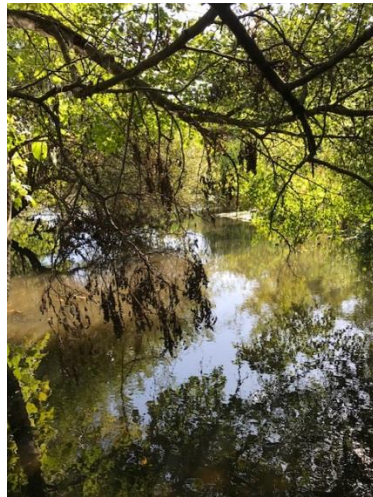
Station 1 (Petrini Apartments) – Monitoring and water sampling took place previously at Station 1 on 9/16/2019.



Statio 2 (West Street) – Monitoring and water sampling took place at Station 2 on 9/16/2019.



Central Avenue Culvert – Outfall water sample collected at the Central Avenue Culvert on 9/16/2019.



Central Avenue Culvert – Outfall water sample collected at the Central Avenue Culvert on 9/16/2019.