



WEEKLY SUMMARY REPORT

Client:	Needham DPW	Dates:	05/20/2017 to 05/26/2017
Contract:	Downtown Improvements	Inspector on site:	P.C.
Contractor:	MDR Construction Co., Inc.		

WORK COMPLETED THIS WEEK

- Continuing to modify traffic signal settings and cycles as required
- Continuing the installation and coordination of the infrastructure between the traffic cameras and the IT Dept. at Town Hall
- Completed the installation of the granite pavers for the future kiosk on the west corner of the Common
- Installed the self-watering tanks and loam for landscape material in the granite planters in the Common
- Completed the installation of the granite pavers for the ornamental archway on the west end of the Common
- Continued to install wiring for lighting circuits on the Common
- Installed the granite pavers and a large area of brick pavers in front of the Common
- Temporarily set the existing flagpole for the Memorial Day ceremonies
- Continued shop drawing reviews

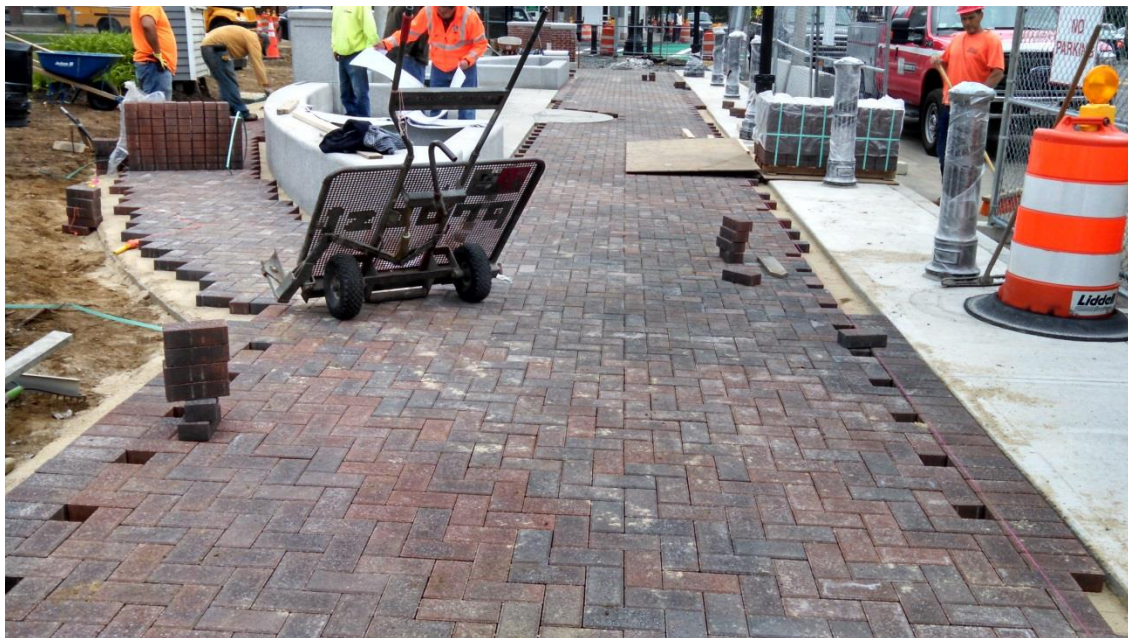
WORK ANTICIPATED FOR NEXT WEEK

- All work scheduled to take place during the day
- Install the concrete foundation for the future fountain or historic statue in the Dedham Ave. island (not begun to date)
- Continue installation of the concrete base slab for the granite and concrete brick pavers at the east end of the Common
- Continue installation of the concrete brick pavers in the east and west ends of the Common
- Continue to modify traffic signal settings and cycles as required
- Begin installation of the structural soil associated with the future tree plantings in sidewalk areas (not begun to date)
- Continue shop drawing submissions and processing

PHOTOS



Granite pavers between the flagpole planter and granite compass



Brick pavers being installed in front of the Common

Needham DPW
Downtown Improvements



Granite pavers installed over future kiosk foundation on the west end of the Common



Granite seat wall and brick and granite pavers being installed in front of the Common

Needham DPW
Downtown Improvements



Area in front of the Common with pavers nearly complete and planters ready to accept plant material