



HIGHLAND AVENUE PERSPECTIVE FROM NORTHEAST



McGinley Kalsow
& Associates LLP
ARCHITECTS & PRESERVATION PLANNERS

JUNE 29, 2008

NEEDHAM TOWN HALL

ALTERNATE 4





**Needham Town
Hall**

1471 Highland Ave.
Town of Needham
Massachusetts

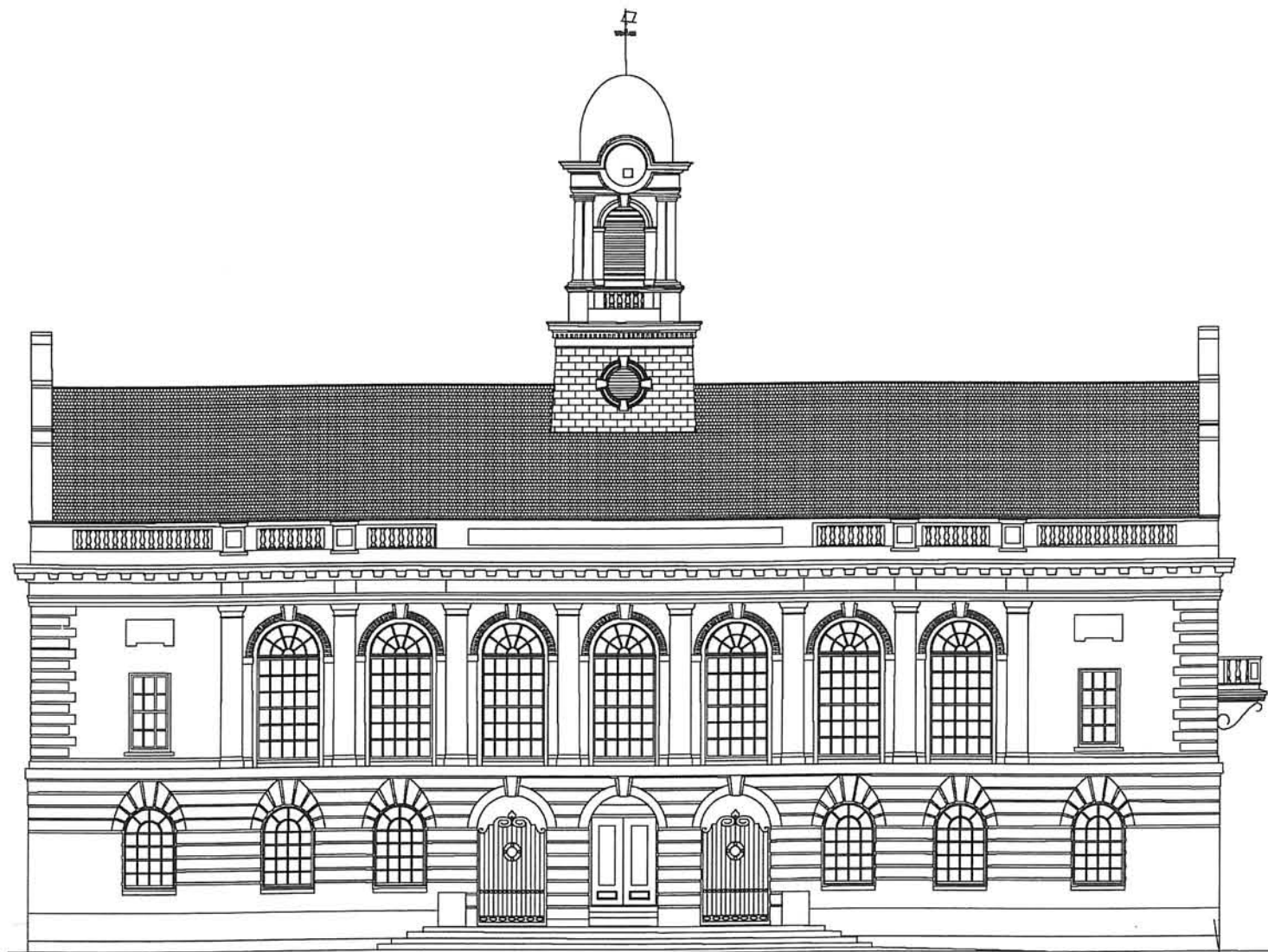
Scale: AS NOTED
Date: JULY 29, 2008
Drawn By: JGR
Checked by: MGA

MK & A McGinley Kalsow
& Associates LLP
ARCHITECTS & PRESERVATION PLANNERS

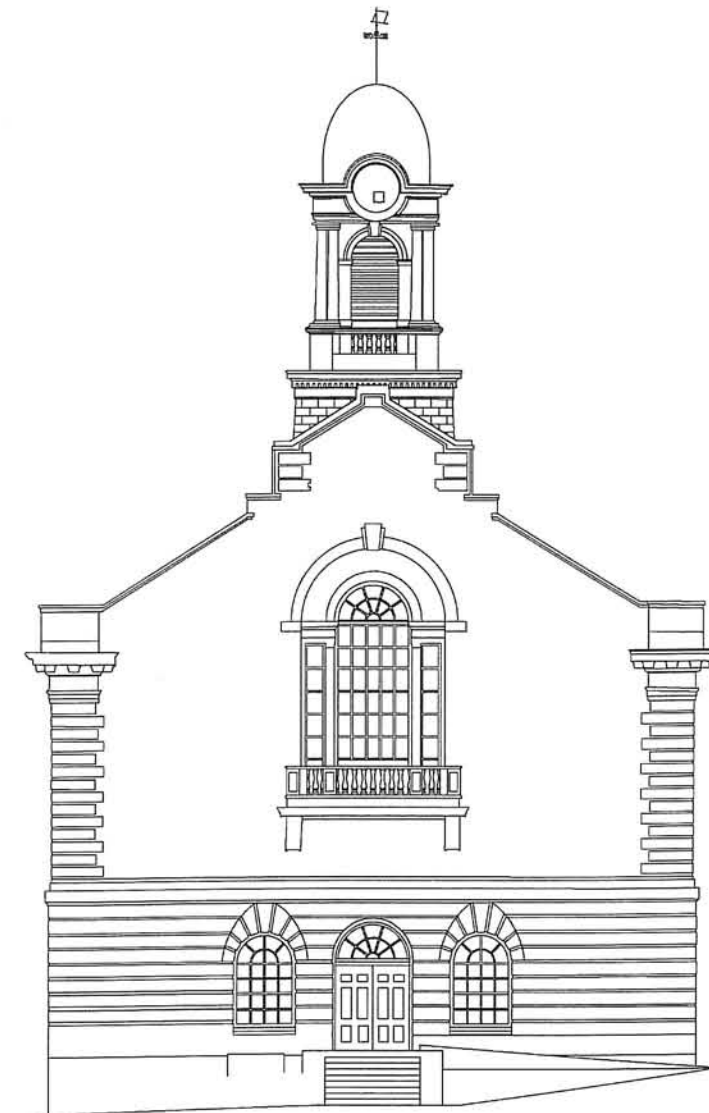
324 Broadway PO Box 45248
Somerville, MA 02145

EXISTING
ELEVATIONS

EX.EL



GREAT PLAIN AVENUE ELEVATION



HIGHLAND AVENUE ELEVATION